

Costume-Con 30

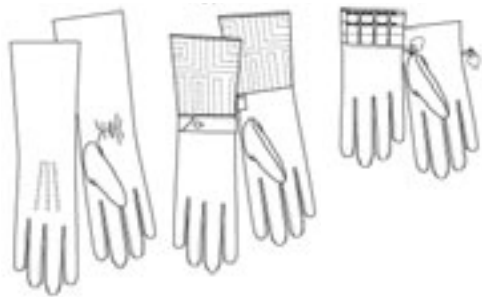
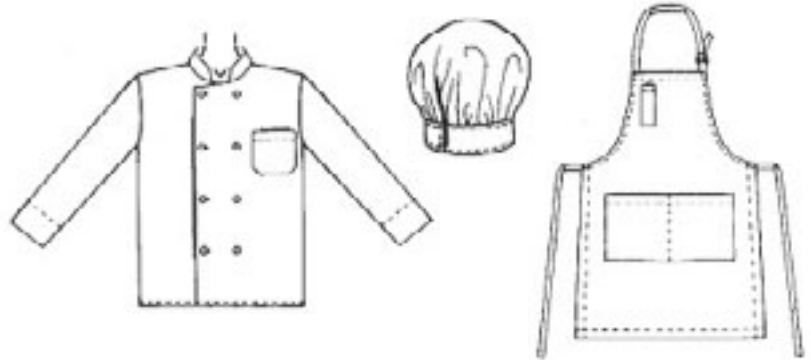
May 11-14, 2012 ☞ Phoenix, AZ

Single Pattern Contest

Patterns can be ordered directly from the companies that produce them or through fabric retailers. (Links to patterns online are included below.)

Jacket, Shirt, Apron,
Pants, Neckerchief, Hat
McCall's M2233
<http://tinyurl.com/446268k>

Double-breasted jacket with mandarin collar;
short sleeved shirt; apron; pull-on pants;
chef's hat; neckerchief is also included.



Gloves -- Vogue V8608

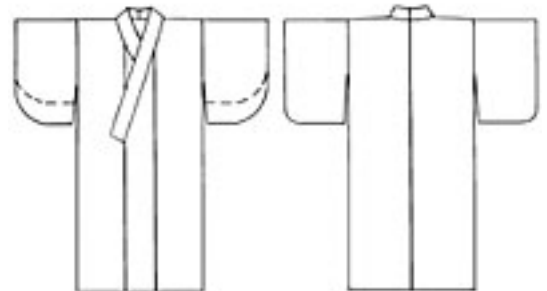
<http://tinyurl.com/3b5vpgn>

Package includes 3 sizes;
small (7"), medium (8") and large (9")

Japanese Kimono
Folkwear #113

<http://www.folkwear.com/113.html>

The informal kimono (yukata),
with instructions for an obi or sash,
is designed for either men or women.



Rules

- You must be a registered member of Costume-Con 30 to enter or model garments.
- Garments must be recognizable as being made from one of the three patterns.
- You may make and enter more than one garment, but an individual should plan on appearing on stage only once. If you wish to combine garments into a "look", you can model them at the same time.

Show

The Single Pattern contest will take place on Friday, May 11, 2012, with the Friday Night Social. The information regarding pre-judging will be forthcoming.

Questions: contact Diane Harris – singlepatternshow@costumecon30.com – 602-565-2019

<http://www.costumecon30.com>